

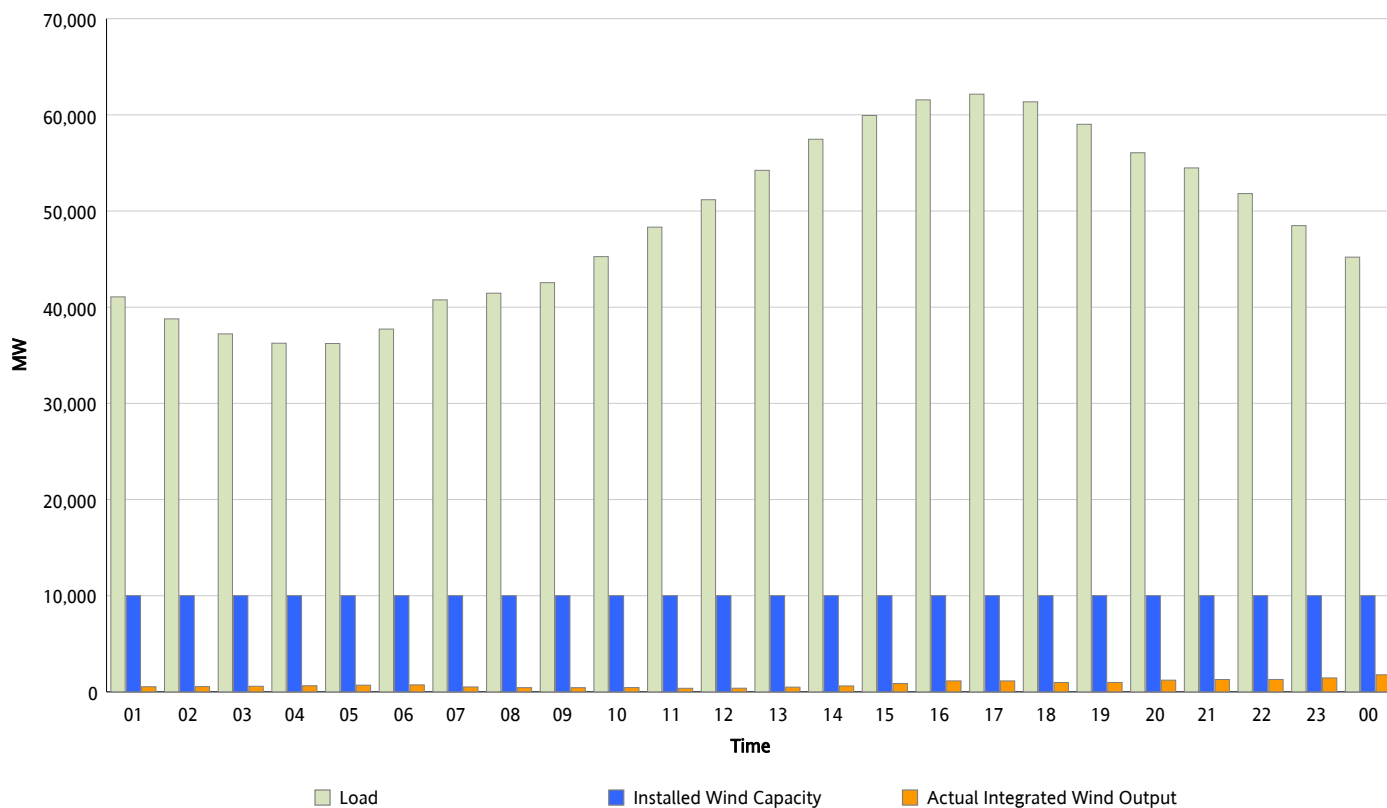


## ERCOT Grid Operations

### Wind Integration Report : 08/31/2012

Peak Load	62,149 MW
Load Peak Hour (HE)	17
Wind Over Peak	1,140 MW
Wind Record 06/19/12	8,368 MW
Max Wind Value*	1,859 MW
Wind Peak Time	23:54
Wind Integration %	4.24 %

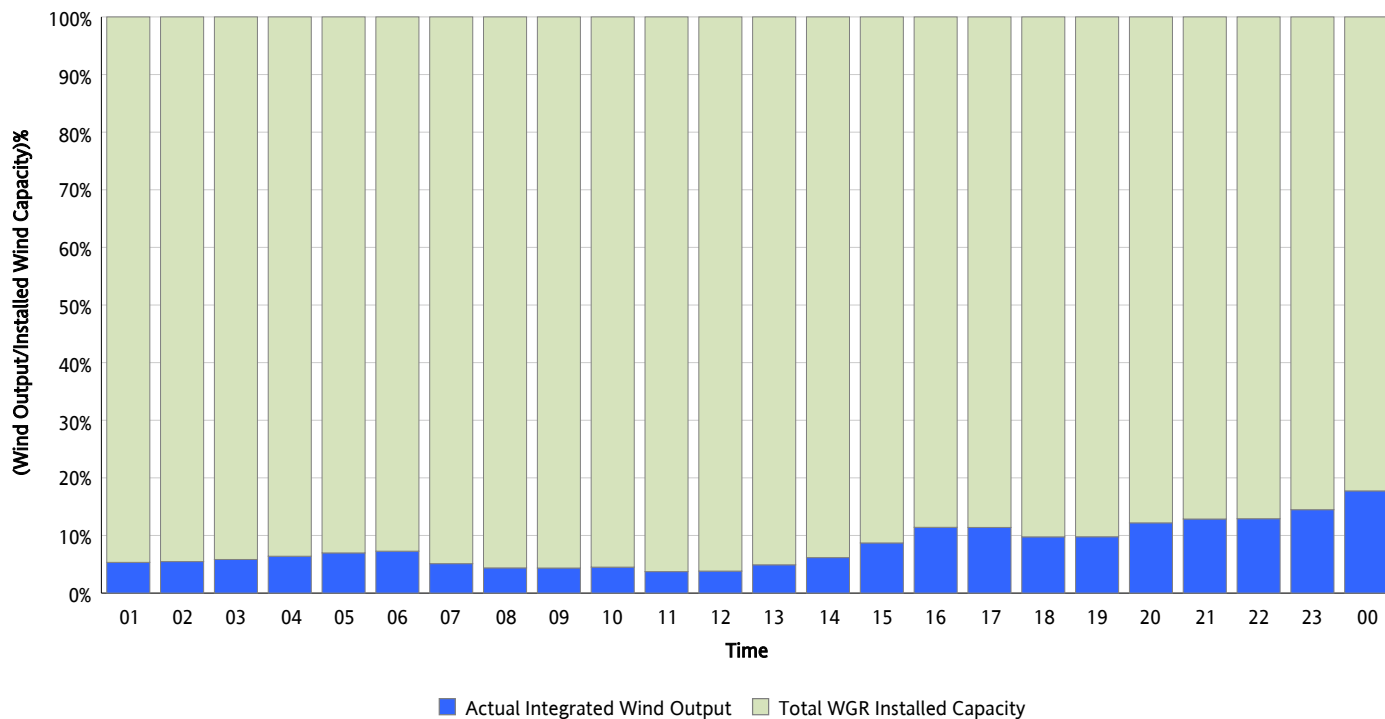
**Hourly Average Actual Load vs. Actual Wind Output**  
**08/31/2012**



*\* Wind Record and Wind Max represent instantaneous values and the rest of the values are integrated over the hour*

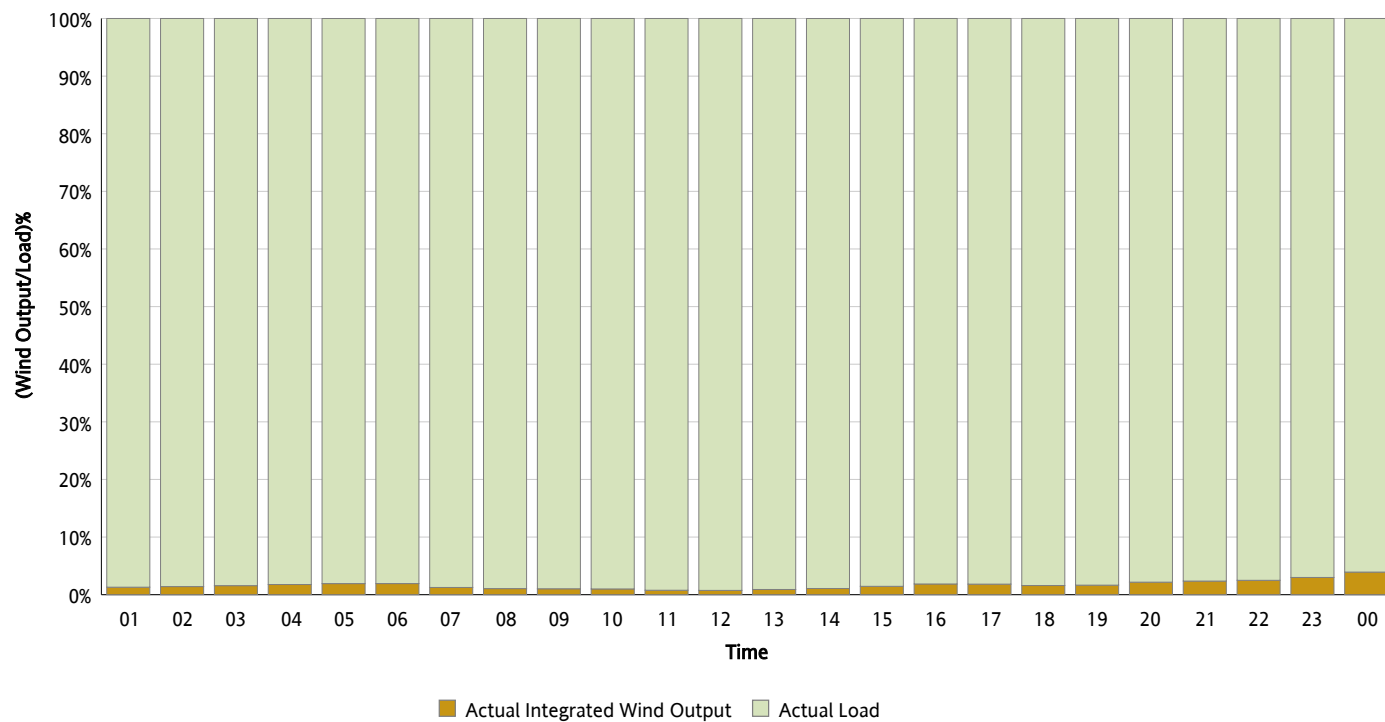
## Actual Wind Output as a Percentage of the Total Installed Wind Capacity

08/31/2012



## Actual Wind Output as a Percentage of the ERCOT Load

08/31/2012



## ERCOT Load vs. Actual Wind Output

08/24/2012 - 08/31/2012

